



DynaPulse 200M Home (USB) System Quick Guide

Thank you for choosing the DynaPulse 200M Home (USB) System (DP-200M) non-invasive blood pressure monitoring and recording system.

Before you start the installation of the DP-200M hardware and software, please make sure you have following items ready:

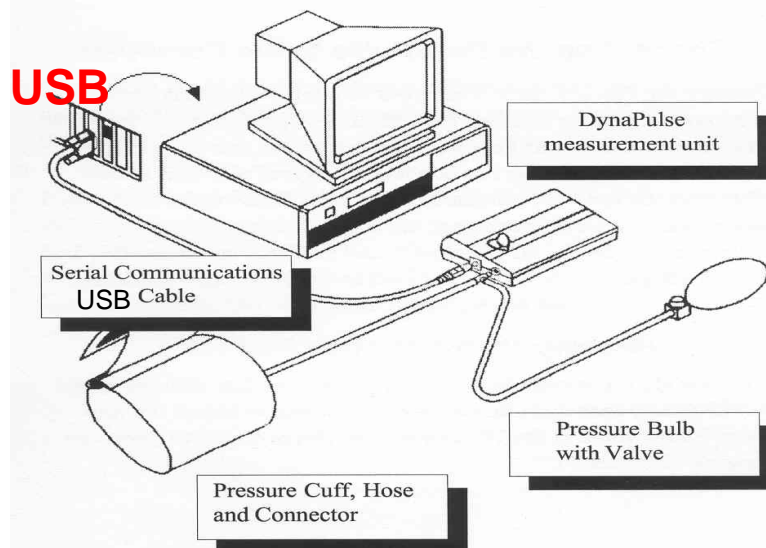
- DP-200M monitor
- USB cable
- Blood Pressure cuff and pump-ball assembly
- DP-200M software and USB drivers for Windows CD
- PC with Windows OS (2000, XP, Vista or Win-Seven) and an available USB communication port.

Getting your DP-200M monitor ready and connecting to your PC:

- Install USB drivers and DynaPulse software to your PC following the software installation guides.
- Connect Cuff/Pump assembly to DP-200M
- Connect USB cable, one end to DP-200M and the other end to PC's USB communication port (NOTE: When first time connecting USB to your PC, make sure to install USB drivers provided in DynaPulse software CD.)

Please note: a complete e-Manual is available on the CD provided.

Equipment Layout



Installing the DP-200M software (requires either CD or DVD/CD drive):

- Insert DP-200M software CD into your CD/DVD drive
- Follow the on-screen instructions and select the appropriate Windows OS for installation of your DP-200M software.
- Please read the e-Manual for detailed instructions on the usage and operation of your DP-200M.

Please note: for the initial installation of the DP-200M software, an automatic COM check window will appear, click "Continue" to find and select an available COM port.

Preparing to take a blood pressure measurement:

- Go to "User" in Main Menu, select "Add" (for first time and new users), and input your Name and ID.
- Go to "Measure" in Main Menu, select "Start" and follow the on-screen instructions to put on the cuff and pump up pressure and perform a blood pressure measurement.
- A successful measurement will display the measured Systolic, Diastolic, Heart Rate and Pulse waveform, etc..
- To store this measurement, go to "File" and select "Save". You may enter comments, such as "before lunch" or "post-workout", to help clarify the measurement.
- If an "ERROR" window appears, follow the on-screen instructions and go to "Measure". Adjust the "High" or "Low" Range settings accordingly. Click "Start" to start a new measurement.

The Main Menu

File	Edit	User	Measure	Trend	Record	Options	Window	Help
File Save Ctrl+S Print Print Page Quit Ctrl+Q	Edit Undo Cut Copy Paste Clear	User Add... Edit... Find... Select Ctrl+U Sort Clear Delete...	Measure Start Ctrl+M High Range Low Range Cuff Size Air Release					
Store measurement and personal information to disk. Print the currently selected display. Print the screen. Exit the program.	Cancel the previous edit operation. Cut selected text from the Record Table or Personal Info display. Place selected item onto the Windows Clipboard. Paste text from the Windows Clipboard at the selected insertion point. Erase selected text.	Add a user to the User List. Change the user's name and/or data storage location. Find a user by ID. Select a user. Sort User List by I.D. number or user name. Close the current user and resets to Guest. Remove a user from the User List.	Begin a measurement using current settings. Select the High (systolic) measurement limit. Select the Low (diastolic) measurement limit. Select the cuff setting for the user. Select the Air Release index value for the user.					

Other features for reviewing recorded blood pressure data:

- Trend Display – Go to “Options” and select “Show Trend Window” in order to review the histogram display of previously recorded blood pressure data.
- Go to “Record” in Main Menu and select “Personal Info” – this will allow you to input and record or edit general personal information.
- Go to “Record” in Main Menu and select “Record Table” – this will display a tabulated display of previously recorded blood pressure measurement data.

File Edit User Measure Trend Record Options Window Help

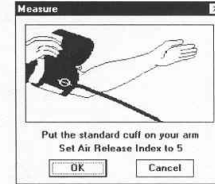
- Trend**
 - Retrieve the measurement Waveform Display: **B**Retrieve
- Record**
 - Display or edit personal medical information: **P**ersonal Info
 - Display blood pressure measurements in tabular form: **R**ecord Table
- Options**
 - Select the communications port to be used by the DynaPulse. Find the communications port used by the DynaPulse: **C**om Port, **C**om Check
 - Reset the unit due to environmental changes: **Z**ero Reset
 - Displays the Trend window. Display the Tool window: **S**how Trend Window, **S**how Tool Window
- Window**
 - Overlap all open displays. Tile all open displays. Arrange displayed icons. Close all measurement windows. List all open displays: **C**ascade (Shift+F5), **T**ile (Shift+F4), **A**rrange Icons, **C**lose All
 - U**ser (patient) List
- Help**
 - On-Line help. Medical information. Version information: **B**asic Usage, **M**edical Facts, **A**bout DynaPulse F1

Taking A Blood Pressure Measurement

Select the START option from the MEASURE menu.

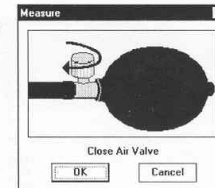


Put the cuff on the arm and press ENTER, or click OK. For further information regarding correct cuff placement, see *Using The Cuff*. Adjust the Air Release Index (the knob on the unit) to the appropriate value.



In this example, a blood pressure reading is taken using the default ranges.

Close the release valve of the pressure bulb by turning the valve knob clockwise. After the valve is shut tightly, press the ENTER key or click OK.



The Measurement Display

USER NAME CURRENT USER DIRECTORY ARTERIAL PULSE AT CURSOR POSITION CURRENT TIME AND DATE

DynaPulse - [Measurement 02/12/95 14:01]

Name: chw c:\dpwin 02/20/95 11:20:44

132 96 Date: 02/12/95
Systolic Mean

79 71 Time: 14:01
Diastolic Pulse

MEASUREMENT TIME SCALE (IN SECONDS) DATE AND TIME OF MEASUREMENT

SYSTOLIC, MEAN DIASTOLIC INDICATORS (LEFT TO RIGHT) OF POSITIONS IN PRESSURE WAVE CUFF PRESSURE SCALE CUFF PRESSURE AT CURRENT CURSOR POSITION

NOTE: The measurement display is intended for use as an analytical tool. Any diagnosis must be performed by a qualified medical practitioner.

Note:

- When you open the DP-200M software, a “User List” window will display with default user as “Guest”. (Please note: blood pressure measurements CANNOT be saved for a Guest!
- Find your name from the User List and double click to select. Perform blood pressure measurement as described above.